



mortgage | property

www.mortgagepropertyshop.co.uk



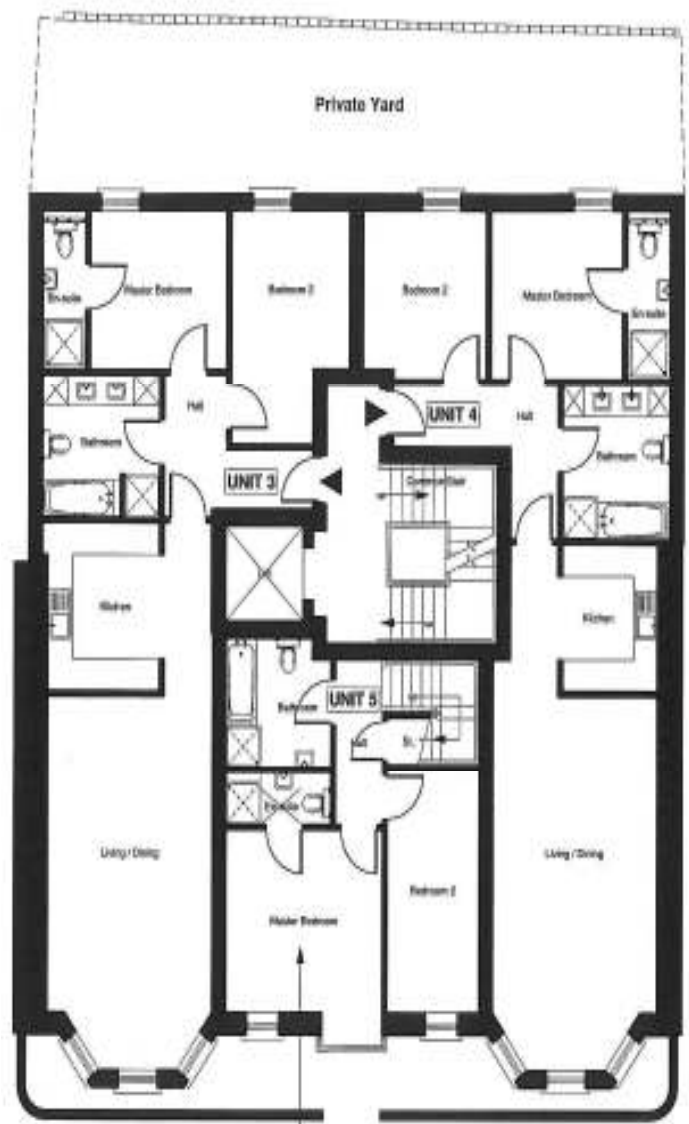
'Harbour View', Kerr Street, Portrush, BT56 8DQ



10 Dunmore Street | Coleraine | 028 7032 0220

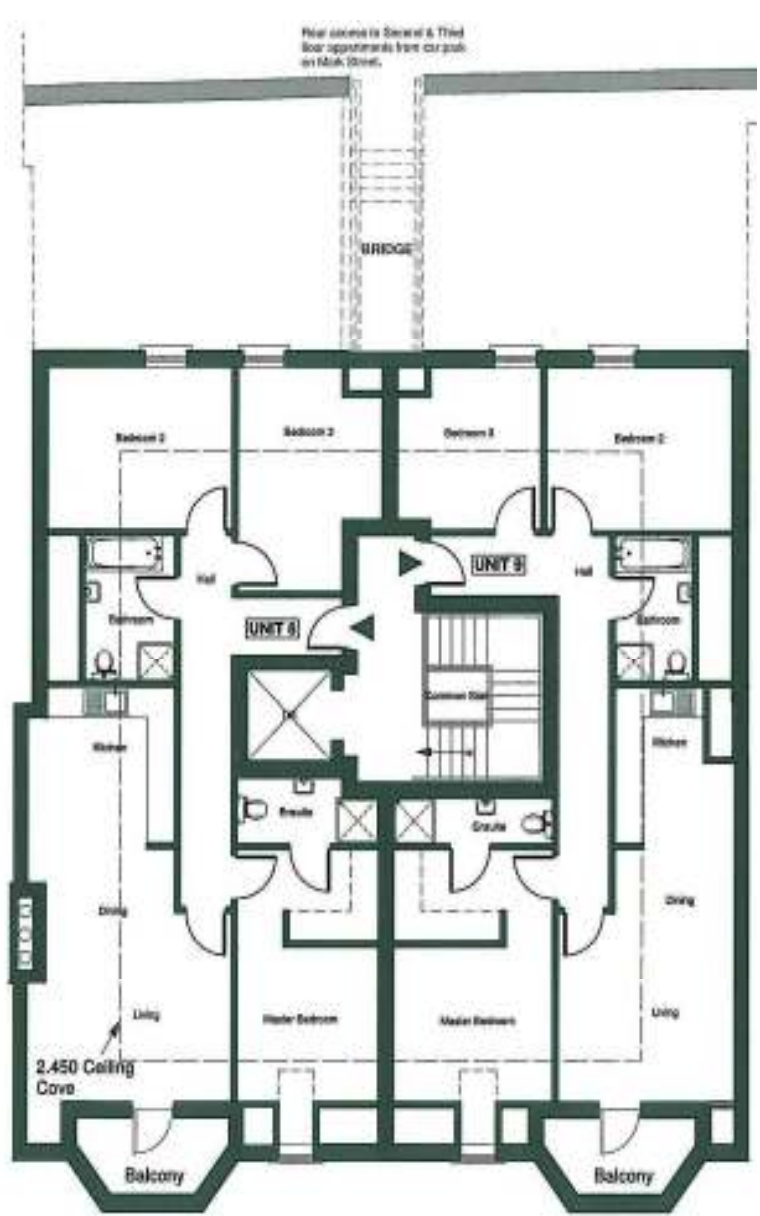
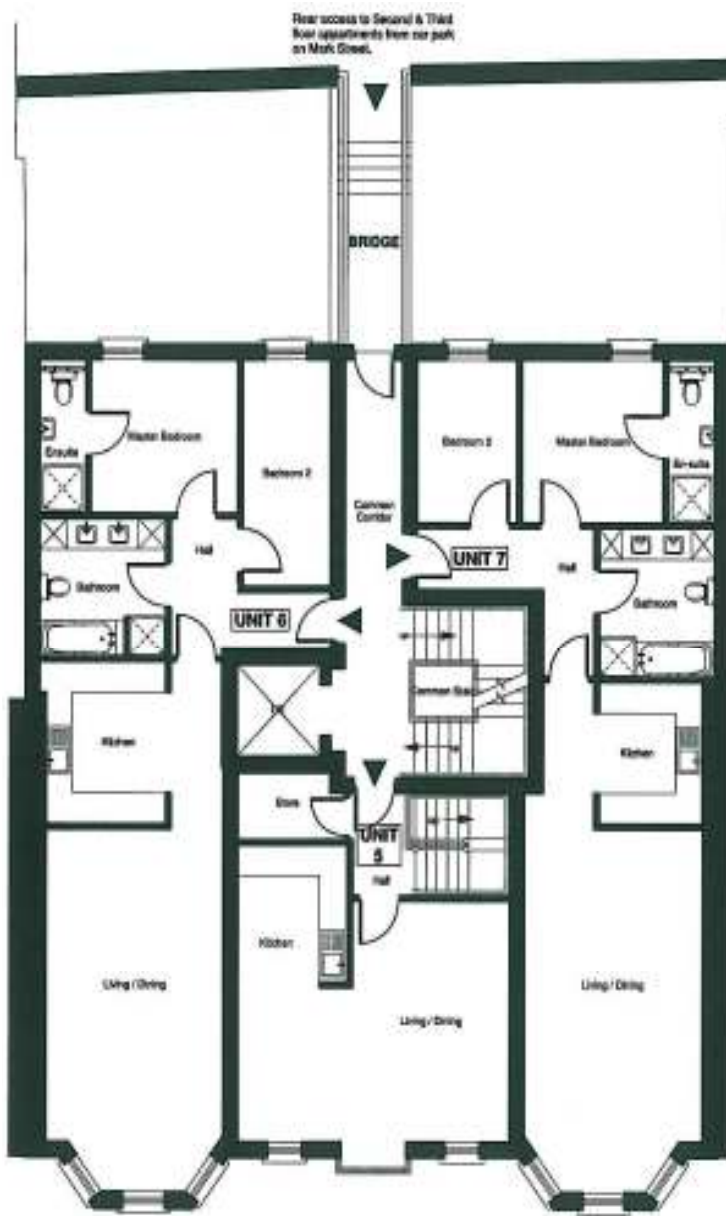


Ground Floor Plan



First Floor Plan

This exclusive new development of 2 and 3 bedroom apartments is situated in a prime location bringing the world renowned Royal Portrush Golf Course and the much distinguished Ramore restaurants to your door step. With the beach only a stones throw away and with such breathtaking views these apartments offer an exciting lifestyle choice or holiday retreat.



- Secure Parking For Each Property
 - Lift Access To All Levels
- Ash Skirting's and Architraves
 - Turnkey Finish
 - PVC Double Glazed Window
 - Gas Fired Central Heating
 - Intercom Door Entry System
- Communal Areas Maintained By Management Company
 - N.H.B.C. 10 Year Guarantee
 - Exceptional views from all apartments



<p>Ground Floor:</p> <p>Unit 1: Total floor area approximately 927 sq.ft SALE AGREED</p> <p>Unit 2: Total floor area approximately 975 sq.ft SALE AGREED</p>	<p>First Floor:</p> <p>Unit 3: Total floor area approximately 825 sq.ft SALE AGREED</p> <p>Unit 4: Total floor area approximately 883 sq.ft SALE AGREED</p>
<p>Second Floor:</p> <p>Unit 6: Total floor area approximately 798 sq.ft £259,950</p> <p>Unit 7: Total floor area approximately 762 sq.ft £259,950</p>	<p>Third Floor:</p> <p>Unit 8: SALE AGREED</p> <p>Unit 9: Total floor area approximately 968 sq.ft £349,950</p>
<p>Duplex Apartment:</p> <p>Unit 5: First floor area approximately 784 sq.ft plus Second floor area approximately 883 sq.ft, £285,000</p>	



10 Dunmore Street
Coleraine
t: 028 7032 0220
e: kate@mortgagepropertyshop.co.uk

www.mortgagepropertyshop.co.uk

These particulars, whilst believed to be accurate are set out as a general outline only for guidance and do not constitute any part of an offer or contract. Intending purchasers should not rely on them as statements or representations of fact, but must satisfy themselves by inspection or otherwise as to their accuracy. No person in this firm's employment has the authority to make or give any representation or warranty in respect of the property. None of the systems or equipment in the property has been tested by Mortgage and Property for year 2000 compliance and the purchasers/ Lessees must make their own investigations.